

CONTENTS:

- StudioPRO Dual-link Extender Transmitter [1]
- StudioPRO Dual-link Extender Receiver [1]
- USB A-B cable, 6' (CBL-000015-006FR) [1]
- Dual-link DVI-D (M to M) cable, 2M (CBL-000023-002MR) [1]
- Universal Power Supply (PWR-000022-R) [2]
- StudioPRO Extender Product Manual

StudioPRO Extender

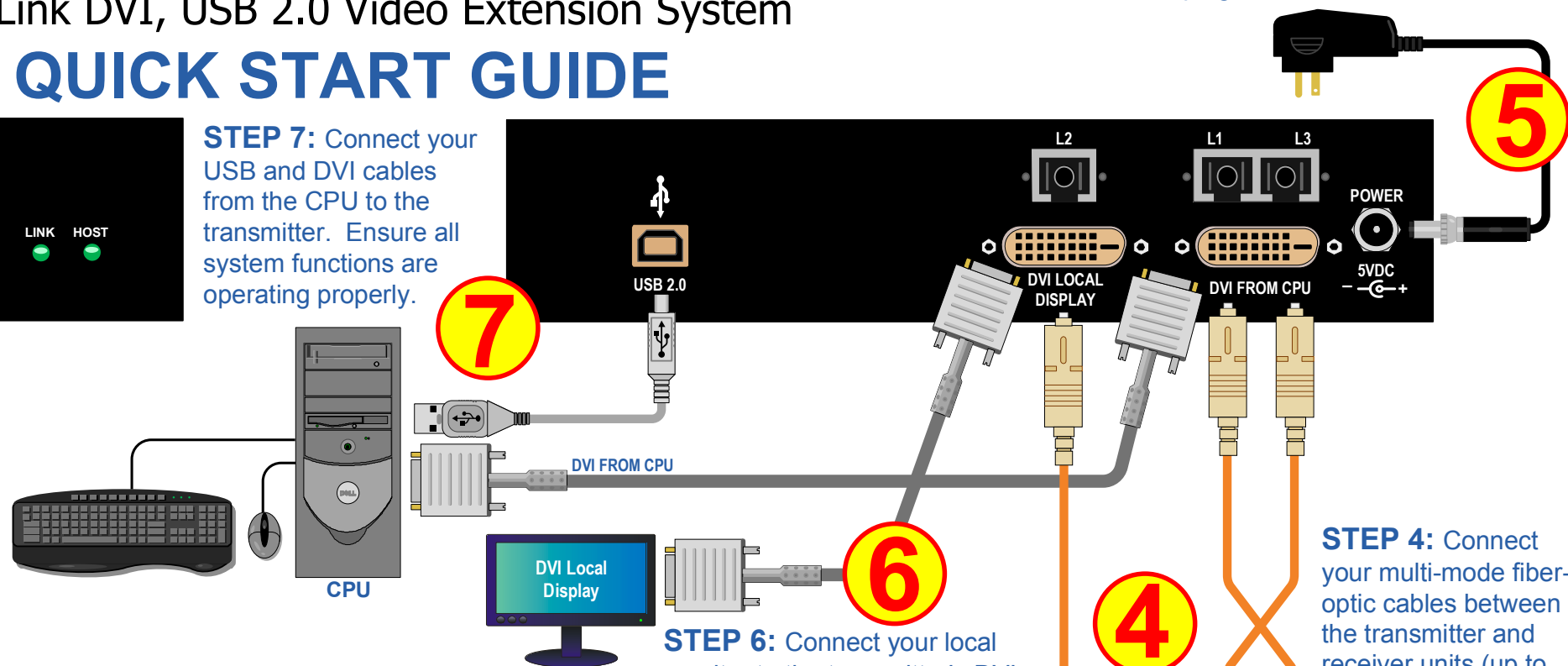
Dual-Link DVI, USB 2.0 Video Extension System

QUICK START GUIDE

STEP 5: Connect the supplied +5V power supply (PWR-000022-R) to the transmitter and plug it into a standard AC source.



STEP 7: Connect your USB and DVI cables from the CPU to the transmitter. Ensure all system functions are operating properly.



Acquire Button

- Used to initiate DDC collection. Works with all modes except Pass-Thru. Must be pressed after switching between DDC modes.

Select Button

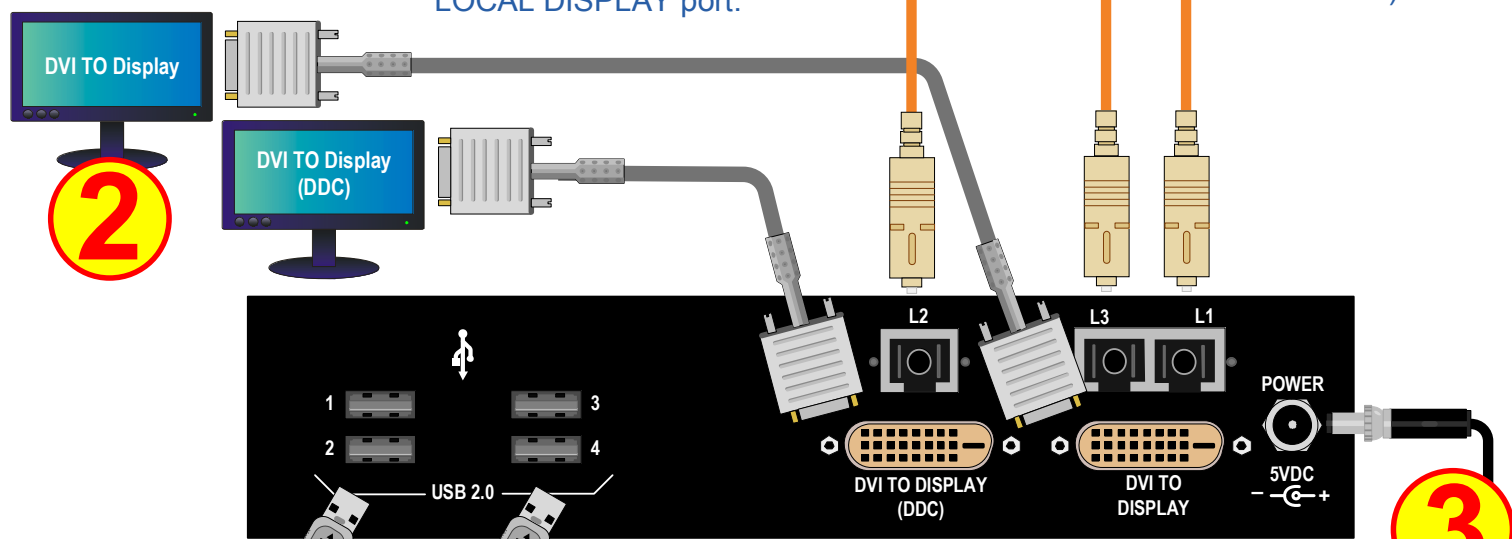
- Used to select the DDC mode. The modes will cycle through Remote Dynamic, Remote Static, Pass-Thru and Local Static.

Both Buttons held 5 seconds

- Holding both buttons for 5 seconds will reload the default DDC table into the Tx and switch to Remote Static mode.

LCL	REM	DDC MODE	DESCRIPTION
OFF	GREEN	REMOTE DYNAMIC	EDID read from remote display and updated each time remote display changes.
ORANGE	GREEN	REMOTE STATIC	EDID read from remote display when acquire button is pressed.
GREEN	GREEN	PASS-THRU	Acts as a direct connection between CPU and display. No emulation is performed.
GREEN	ORANGE	LOCAL STATIC	EDID read from local display when acquire button is pressed.

STEP 2: Connect the output display device(s) to the receiver's DVI TO DISPLAY ports. The DDC port is the PRIMARY port and should be used when there is only one display device connected.



STEP 6: Connect your local monitor to the transmitter's DVI LOCAL DISPLAY port.

STEP 4: Connect your multi-mode fiber-optic cables between the transmitter and receiver units (up to 1000 meters).



STEP 1: Install any USB peripheral devices to the receiver's USB 2.0 ports.



STEP 3: Connect the supplied +5V power supply (PWR-000022-R) to the receiver and plug it into a standard AC source.



PHONE: (800) 291-3211
WEBSITE: www.thinklogical.com
EMAIL: support@thinklogical.com

Copyright © 2009. All rights reserved. Printed in the U.S.A. All trademarks and service marks are the property of their respective owners. StudioPRO_Extender_Dual-Link_Quick_Start_Rev_B

Visit us online at www.thinklogical.com for more product information, current updates and the complete line of Thinklogical™ products.