

CONTENTS:

- StudioPRO Dual-link Extender Transmitter [1]
- StudioPRO Dual-link Extender Receiver [1]
- USB A-B cable, 6' (CBL-000015-006FR) [1]
- Dual-link DVI-D (M to M) cable, 2M (CBL-000023-002MR) [1]
- Universal Power Supply (PWR-000022-R) [2]
- StudioPRO Extender Product Manual

StudioPRO Extender

Dual-Link DVI, USB 2.0 Single-Mode Video Extension System

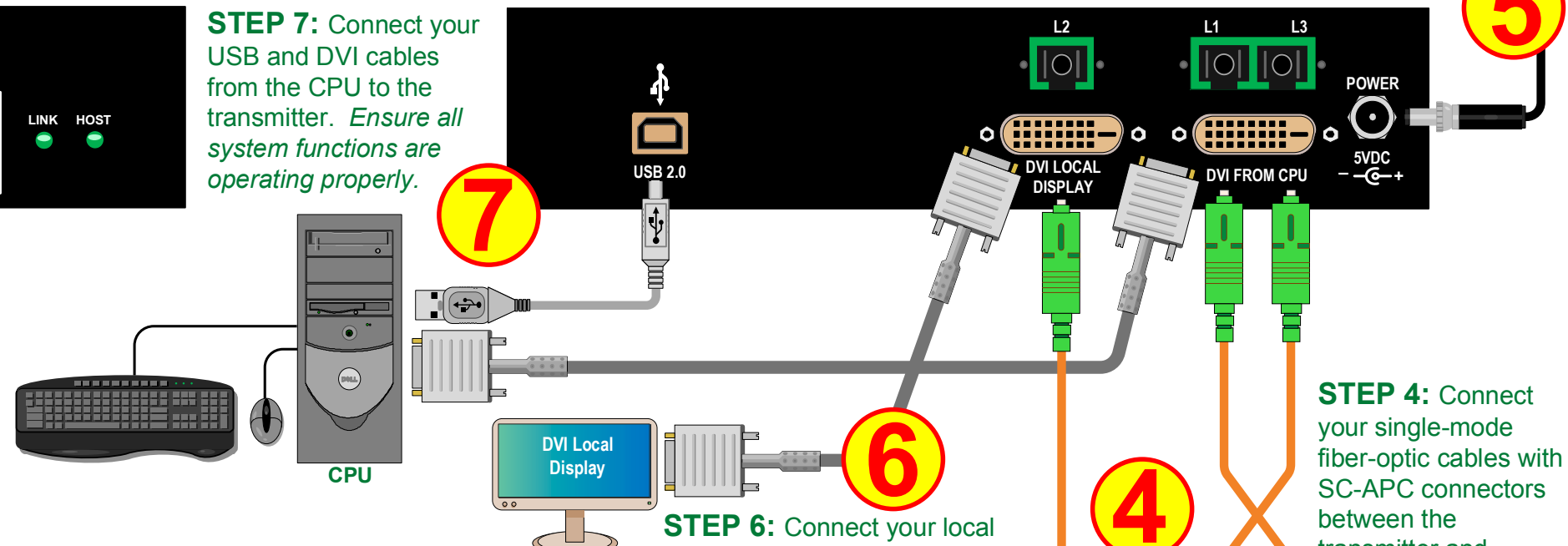
QUICK START GUIDE

STEP 5: Connect the supplied +5V power supply (PWR-000022-R) to the transmitter and plug it into a standard AC source.



StudioPRO DUAL-LINK EXTENDER TRANSMITTER

STEP 7: Connect your USB and DVI cables from the CPU to the transmitter. *Ensure all system functions are operating properly.*



Acquire Button

- Used to initiate DDC collection. Works with all modes except Pass-Thru. Must be pressed after switching between DDC modes.

Select Button

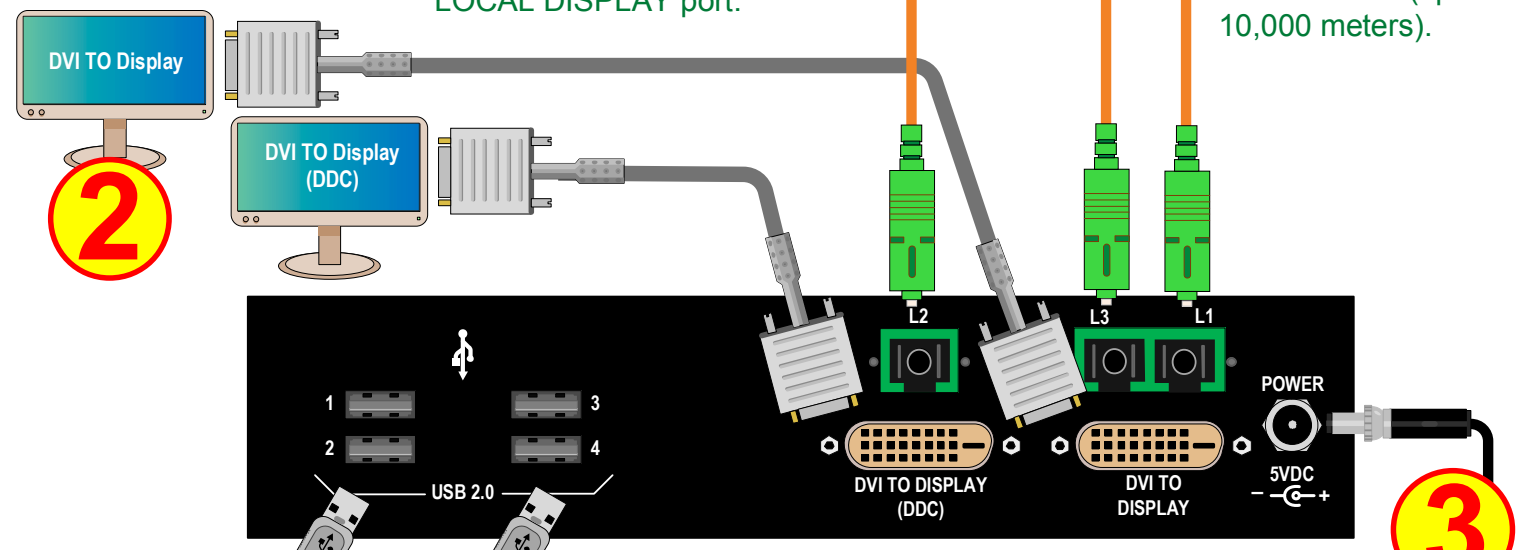
- Used to select the DDC mode. The modes will cycle through Remote Dynamic, Remote Static, Pass-Thru and Local Static.

Both Buttons held 5 seconds

- Holding both buttons for 5 seconds will reload the default DDC table into the Tx and switch to Remote Static mode.

| LCL | REM | DDC MODE | DESCRIPTION |
|--------|--------|----------------|---|
| OFF | GREEN | REMOTE DYNAMIC | EDID read from remote display and updated each time remote display changes. |
| ORANGE | GREEN | REMOTE STATIC | EDID read from remote display when acquire button is pressed. |
| GREEN | GREEN | PASS-THRU | Acts as a direct connection between CPU and display. No emulation is performed. |
| GREEN | ORANGE | LOCAL STATIC | EDID read from local display when acquire button is pressed. |

STEP 2: Connect the output display device(s) to the receiver's DVI TO DISPLAY ports. The DDC port is the PRIMARY port and should be used when there is only one display device connected.



StudioPRO DUAL-LINK EXTENDER RECEIVER

STEP 1: Install any USB peripheral devices to the receiver's USB 2.0 ports.



STEP 3: Connect the supplied +5V power supply (PWR-000022-R) to the receiver and plug it into a standard AC source.



PHONE: (800) 291-3211
WEBSITE: www.thinklogical.com
EMAIL: support@thinklogical.com

Copyright © 2009. All rights reserved. Printed in the U.S.A. All trademarks and service marks are the property of their respective owners.

Visit us online at www.thinklogical.com for more product information, current updates and the complete line of Thinklogical™ products.